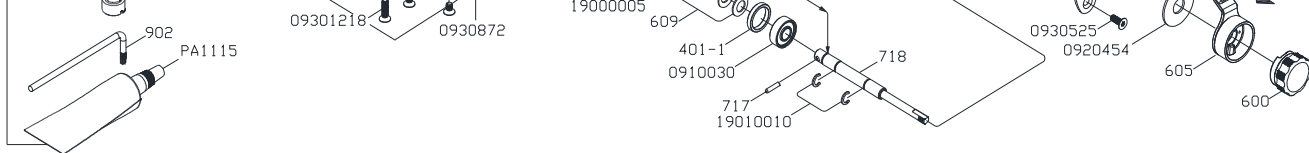


A-5IIa

| KEY NO | PARTS NO | PARTS NAME | KEY NO | PARTS NO | PARTS NAME | KEY NO | PARTS NO | PARTS NAME |
|--------|----------|--------------------------|--------|----------|---------------------------|--------|----------|-----------------|
| 100 | 11001921 | Main body assy. | 510 | 15100110 | Handle knob rivet | 901 | 19010010 | C type retainer |
| 100-1 | 11001969 | Main body assy. | 512 | 15120110 | Handle knob cover assy. | 901 | 19010022 | C type retainer |
| 102 | 11020091 | Reel foot | 513 | 15130031 | Handle cover | 901 | 19010026 | C type retainer |
| 102-1 | 11020061 | Reel foot gasket | 515 | 15150002 | Handle nut retainer screw | 902 | 19020003 | Tool |
| 114 | 11140025 | Reel clamp assy. | 516 | 15160045 | Handle nut retainer | 910 | 0910030 | Ball bearing |
| 114-1 | 11140060 | Reel clamp | 516-1 | 15160038 | Handle nut retainer assy. | 910 | 0910524 | Ball bearing |
| 115 | 11150030 | Clamp screw | 516-2 | 15160033 | Handle nut retainer | 910 | 0910531 | Ball bearing |
| 116 | 11160017 | Reel clamp nuts | 517 | 15170036 | Compression assy. | 910 | 0910532 | Ball bearing |
| 200 | 12001227 | Handle side plate assy. | 600 | 16000178 | Cast control cap assy. | 912 | 19120032 | Cover plate |
| 201 | 12010084 | Anti-re pawl | 600-1 | 16000110 | Cast drag knob assy. | 913 | 19130009 | Waved washer |
| 202 | 12020046 | Ratchet | 601-1 | 16010012 | Compression spring | 920 | 0920025 | Washer |
| 203 | 12030010 | Control pin | 601-2 | 16010010 | Compression spring | 920 | 0920026 | Washer |
| 204 | 12040039 | Compression spring | 605 | 16050186 | Lever drag assy. | 920 | 0920079 | Washer |
| 204-2 | 12040027 | Compression spring | 605-2 | 16050185 | Drag lever decoration | 920 | 0920283 | Washer |
| 204-3 | 12040035 | Compression spring | 605-3 | 16050223 | Lever drag assy. | 920 | 0920606 | Washer |
| 205 | 12050044 | Decoration plate | 607 | 16070084 | Pinion guard | 920 | 0920423 | Washer |
| 206 | 12060011 | Lever drag stopper cap | 608 | 16080001 | C type retainer | 920 | 0920427 | Washer |
| 216 | 12160016 | Extened spring | 608-1 | 16080024 | C type retainer | 920 | 0920454 | Washer |
| 226 | 12260003 | Ceramic ball | 609 | 16090023 | Main shaft spring washer | 920 | 09201007 | Washer |
| 241 | 12410002 | Compression spring | 610 | 16100074 | Drag washer | 930 | 0930872 | Screw |
| 242 | 12420001 | Compression spring | 611 | 16110078 | Eared washer | 930 | 09301117 | Screw |
| 303 | 13030078 | Click button | 612 | 16120106 | Key washer | 930 | 09301178 | Screw |
| 304 | 13040024 | Click pawl | 700 | 17000337 | High speed drive gear | 930 | 09301218 | Screw |
| 305 | 13050016 | Click pawl spring | 700-1 | 17000338 | Low speed drive gear | 930 | 09301219 | Screw |
| 309 | 13090021 | Clicker pin | 701 | 17010320 | Drive gear shaft | 930 | 09301222 | Screw |
| 400 | 14001054 | Spool | 702 | 17020076 | High speed pinion gear | 930 | 09301223 | Screw |
| 401 | 14010034 | Click Gear | 702-1 | 17020493 | Low speed pinion gear | 930 | 09301228 | Screw |
| 401-1 | 14010041 | Spool click gear bushing | 717 | 17170015 | Main shaft pin | 930 | 09301411 | Screw |
| 500 | 15000429 | Handle arm assy. | 718 | 17180356 | Main shaft | 930 | 09301464 | Screw |
| 500-1 | 15000433 | Handle arm | 726 | 17260009 | Drive gear bushing | 930 | 0930525 | Screw |
| 501 | 15010010 | Handle nut | 726-1 | 17260010 | Drive gear bushing | 930 | 0930532 | Screw |
| 507 | 15070038 | Push button assy. | 900 | 19000006 | E type retainer | 940 | 0940013 | O ring |
| 507-2 | 15070013 | Clutch shift drive pin | 900 | 29000001 | E type retainer | PA1115 | PA1115 | Oil tank |
| 508 | 15080002 | Push button spring | 900 | 19000005 | E type retainer | | | |



A-5IIa

| KEY NO | PARTS NO | PARTS NAME | KEY NO | PARTS NO | PARTS NAME | KEY NO | PARTS NO | PARTS NAME |
|--------|----------|-------------|--------|----------|-----------------|--------|----------|------------|
| 509 | 15090081 | Handle knob | 901 | 19010006 | C type retainer | | | |

2017.02.13

109OKM04701052